

# Knob & Tube Wiring by Finn Home Inspectors

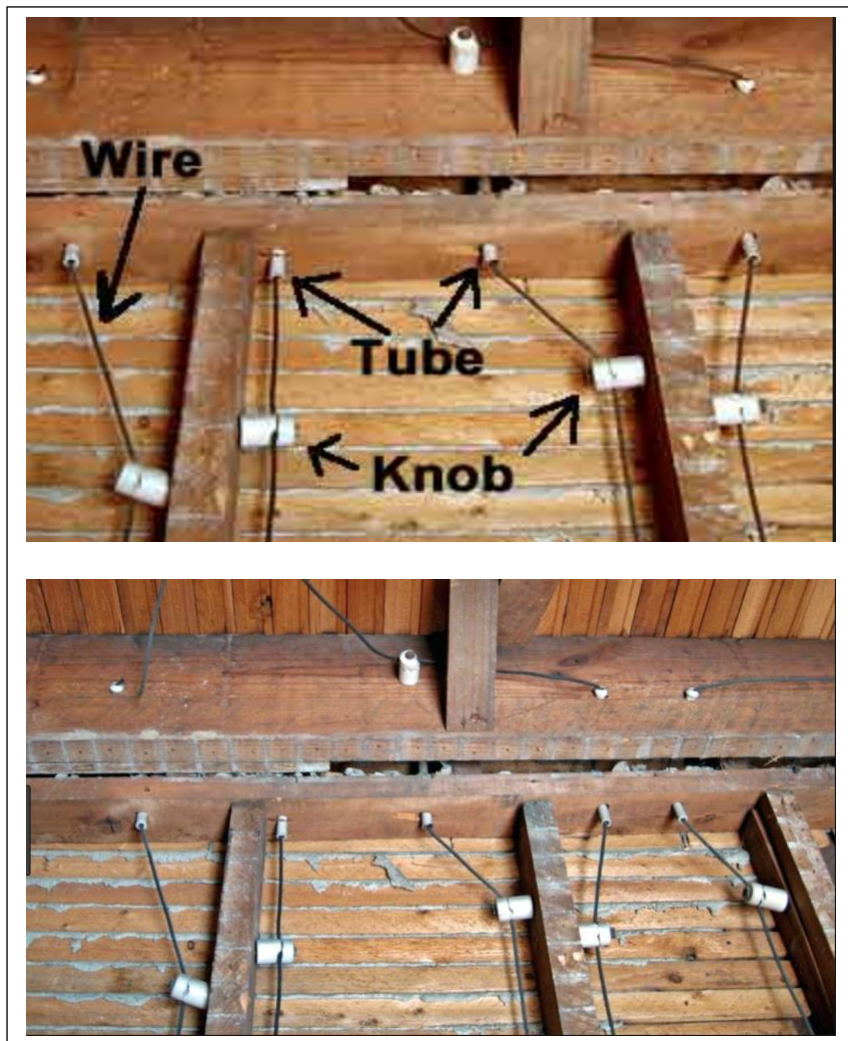
Knob & tube wiring is considered a fire safety hazard, all knob & tube wiring needs to be removed from the house. It is common in homes built before 1930's, was the original wiring for a house. The knob & tube designation comes from the ceramic knobs that support the wires, and the ceramic tubes that surround the wires where they go through wood members. At times, due to location or stored items, an inspector may not be able to see this wiring.

One of the concerns with knob & tube wiring is the insulation can break down and fall off the wires.

A large concern with the wires is they were designed to be in walls that had no insulation. When insulation is added in the walls and power is being drawn through them heat can build up in the wires. This build up in heat can cause fires.

Another problem with knob & tube wiring is there are only two conductors, a hot and neutral, no ground.

Most insurance companies will no longer insure a house with knob & tube wiring due to the concerns noted above.



In some areas a heavier insulation was installed over the knob & tube wires as shown above. The heavier insulation had a shining material weaved in which is distinctive, helping the inspector not confuse this with a cloth insulation used over some insulation.